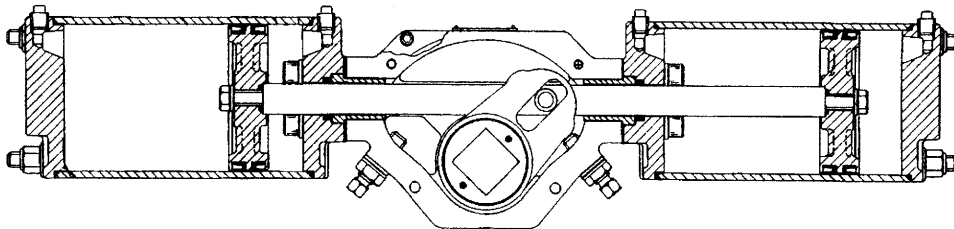
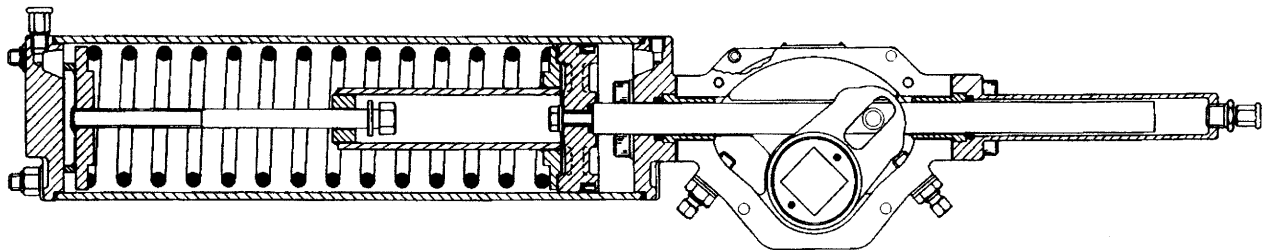


DOUBLE-ACTING ACTUATOR, ONE CYLINDER (TOP VIEW)

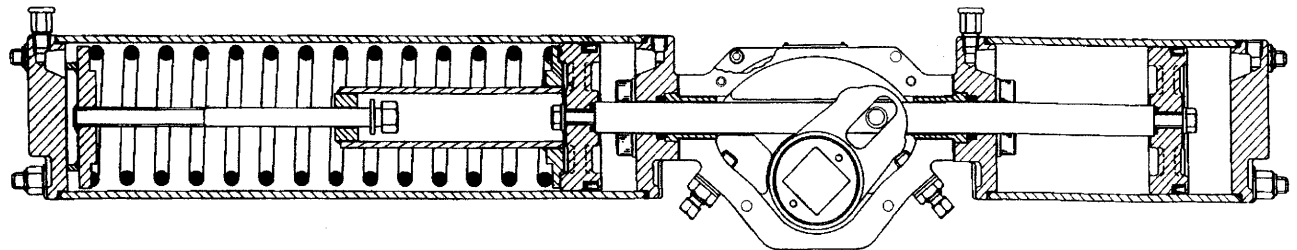


DOUBLE-ACTING ACTUATOR, TWO CYLINDERS (TOP VIEW)

*Figure 2. Double-Acting Actuators*



SPRING-RETURN ACTUATOR, ONE CYLINDER (TOP VIEW)



SPRING-RETURN ACTUATOR, TWO CYLINDERS (TOP VIEW)

*Figure 3. Spring-Return Actuators*